

# WHO ARE OUR SPONSORS?

Our sponsor program started with 40 sponsors when our program began in 1999. Now, more than 630 individuals, groups of friends, organizations, and schools work together to support, motivate, and encourage nearly 500 Safe Passage students.



More than **630 sponsors** from **20 countries** support **500 Safe Passage students**.

## Your investment

When you add up the costs of all the holistic programs we provide for all our students each year, the **total per child per year equals \$3,000**. Sponsors help offset our investment in education, meals, and social support for all of our students, regardless of their sponsor status!

## WHERE WILL YOUR SAFE PASSAGE STORY BEGIN?



**VOLUNTEER**



**SUPPORT TEAM**



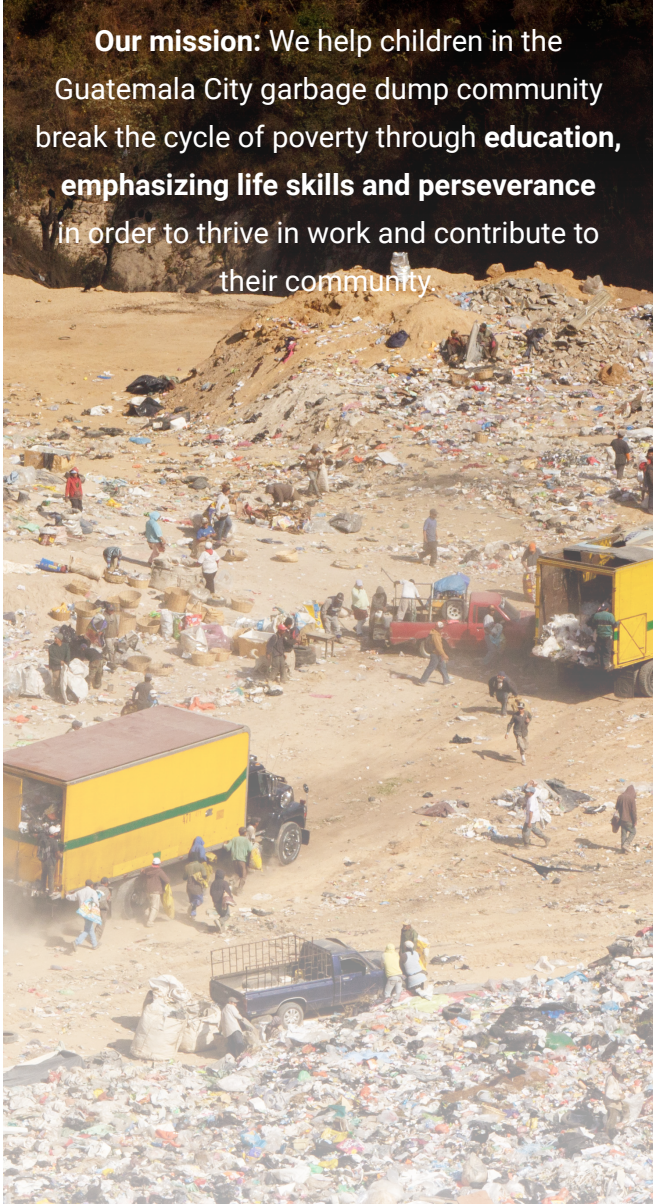
**VISIT**

There are many ways to **get involved**.

[www.safepassage.org/take-action](http://www.safepassage.org/take-action)



**Our mission:** We help children in the Guatemala City garbage dump community break the cycle of poverty through **education**, **emphasizing life skills and perseverance** in order to thrive in work and contribute to their community.



**Safe Passage**  
Camino Seguro

**HOPE  
EDUCATION  
OPPORTUNITY**

### U.S. Office

49 Farm View Dr  
Suite 302  
New Gloucester, ME 04260  
(207) 846-1188

### Guatemala Program & Office

6a. Avenida 11-95 Zona 7  
Colonia Landivar  
Ciudad de Guatemala  
(502) 7832-8428

[www.safepassage.org](http://www.safepassage.org) | [sponsorship@safepassage.org](mailto:sponsorship@safepassage.org)



**Safe Passage**  
Camino Seguro

# SPONSORSHIP



# WHY DO SPONSORS MATTER?

Our children and families live in one of the poorest communities near the Guatemala City garbage dump, one of the largest landfills in all of Central America. Sponsors help give all students:

- » Personal encouragement and support
- » Daily nourishing meals and snacks
- » Healthcare through our partner, Shared Beat
- » School supplies, books and uniforms
- » Holistic education and hands-on activities
- » Training for our teachers and staff
- » Enrichment programs (music, art, sports)



Guatemalan public schools offer schooling only **4 hours each day**. Safe Passage gives students access to full-day education.

## Why now?

We're expanding our full-day accredited school to better meet the needs of our students. We're hiring additional qualified teachers, reaching more students, implementing progressive curricula, and growing our community impact.

Our full-day program offers the opportunity for us to address extreme poverty at a much deeper level. **Your donations keep our program thriving.**



Join our global community and change the lives of 500 children in the Guatemala City garbage dump community.



Sponsor a  
**STUDENT**  
\$50-250 monthly

**YOUR IMPACT**

- Safe, caring environment
- Supplies and uniforms
- Daily meals and snacks

**SPONSOR BENEFITS**

- A profile of your student
- 2 personal updates each year
- Cross-cultural relationships



Sponsor a  
**CLASS**  
\$5,000 annually

- Teaching technology
- Educational excursions
- Books and supplies

- Photo of your class
- Recognition plaque
- 2 progress reports each year



Sponsor a  
**TEACHER**  
\$10,000 annually

- Training opportunities
- Innovative curricula
- Resources and guidance

- Photo of your teacher
- Recognition plaque
- 2 progress reports each year



Our students come from difficult backgrounds and many do not receive positive encouragement at home; motivation and care from you provides a real boost in self-esteem and self-worth.

**YOU CAN CHANGE LIVES.**

“

These are my people. These are my children. This is my responsibility.

VALENTINO, GUATEMALA/CHICAGO



**HANLEY’S HELPERS**

Monthly giving program

We’re guided by the vision of our founder, Hanley Denning (1970-2007), who started Safe Passage with

40 students in 1999. In honor of her legacy, Hanley’s Helpers donate monthly gifts (starting at \$5 per month) to ensure the great work Hanley started continues for many years.

[www.safepassage.org/monthly-giving](http://www.safepassage.org/monthly-giving)

“

What started as sponsorship has evolved. I think of Nereyda and her family as an extension of our own. MAUREEN, WISCONSIN



Start your sponsor story today.

[www.safepassage.org/sponsor](http://www.safepassage.org/sponsor)

**SAY “SÍ” TO SPONSORSHIP**

☐ Teacher ☐ Classroom ☐ Child\*

Name \_\_\_\_\_

Address \_\_\_\_\_

City \_\_\_\_\_ State \_\_\_\_\_

Zip Code \_\_\_\_\_ Country \_\_\_\_\_

Phone \_\_\_\_\_

Email \_\_\_\_\_

I’d like to donate \$ \_\_\_\_\_

\_\_\_\_\_ monthly \_\_\_\_\_ quarterly \_\_\_\_\_ annually

☐ as a one-time gift ☐ as a Hanley’s Helper

**Donation payment options:**

☐ Check (U.S. funds only) ☐ Credit card

☐ Please contact me about direct debit

Card # \_\_\_\_\_

Expiration date \_\_\_\_ / \_\_\_\_

Signature \_\_\_\_\_

*I authorize safe Passage to initiate charges to above credit card.*

*\*Child sponsors, please select your preferences.*

☐ No preferences, please pair me with a student in need.

☐ I’d like to sponsor a: \_\_\_\_ girl \_\_\_\_ boy \_\_\_\_ years old

☐ Specific student: \_\_\_\_\_

All donations are 100% tax-deductible as allowed by law. Safe Passage Tax ID #01-0532835. Questions? Call our U.S. office from 9am-5pm Monday-Friday: 207-846-1188.

Please complete and mail to Safe Passage, 49 Farm View Dr, Suite 302, New Gloucester, ME 04260 or email to [sponsorship@safepassage.org](mailto:sponsorship@safepassage.org)